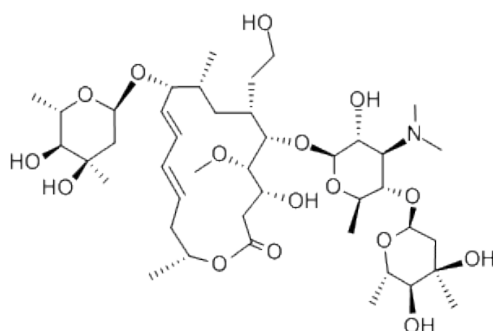




Erythropoietin (EPO):

(a glycoprotein hormone that controls erythropoiesis or red blood cell production)

Recombinant human erythropoietin (rHu-EPO) is a drug used to stimulate red blood cell production. EPO is also produced constitutively by the kidney as a 30,400 dalton glycoprotein.



Erythropoietin (EPO)

inVentiv Health has validated a robust enzyme linked immunosorbent assay (ELISA) to detect and quantitate recombinant human erythropoietin (rHu-EPO) in human serum. The assay measures concentrations within the range of 10 mIU/mL and 500 mIU/mL (66.6 pg/mL and 3,330 pg/mL as measured using WHO international standard 11/170). The assay is quick and simple which allows for analysis of at least 90 samples per day per analyst for expedited results to meet your timelines. [Request a quote](#)

Assay Performance	EPO
Analytical Runs	392
within acceptance criteria	96.9%
Calibration Standards	2352
within acceptance criteria	99.9%
Quality Controls	2727
within acceptance criteria	96.7%
Mean ISR Reassay Rate	96.7%