

INVENTIV HEALTH EXPANDS BIOANALYTICAL LABORATORY SERVICES IN PRINCETON AND QUEBEC CITY



Strong Demand for Customized Services

Ligand Binding Expansion

Clients will soon/now be able to tap into an expanded, highly-specialized Ligand Binding and Exploratory Bioanalysis Team. The department is adding six to eight scientists, significant capacity in instrumentation, and augmenting existing cell-based assay capacity. With this new talent, we will now also expand these services to our Quebec lab.

inVentiv Health Bioanalysis continues to be a favorite choice of the pharmaceutical industry for PK and ADA support for biotherapeutic development and biomarkers. Led by Dr. Christopher Beaver, the Ligand Binding and Exploratory Bioanalysis Department focuses on technical execution and customer service.

The addition of expert personnel and updated instrumentation will provide our clients with the additional capacity they're asking for. "We are excited to know that our approach to customer service is received so well across the industry," Dr. Beaver noted. A big part of that customer focus is flexibility – inVentiv Health is working with our partners to add services vital to their success.

Dr. Beaver added, "Over my 6 years building the Princeton laboratory, we have listened and reacted to the needs of our clients. This means we upgrade our systems to match their needs and add personnel to ensure we can meet or exceed timelines. Whether the addition of the ECL instruments, installation of the innovative Perkin Elmer alphaLISA system, or the expansion of our cell-based assay capabilities, each of these efforts was done in partnership with our clients."

Our latest expansion will provide even more flexibility to add new services for new and existing clients. Rounding out the expansion is the return of Ligand Binding Services to Quebec City. "We are especially excited to bring Ligand Binding services to our Quebec City laboratory. The demand has been amazing, and the first projects for Quebec City Ligand Binding are already in the schedule. This gives our clients more options and allows us to coordinate R&D as well as sample analysis across sites, benefitting from shared expertise and capacity."



Dr. Christopher Beaver

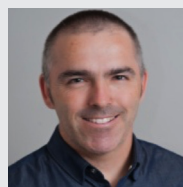
Spotlight on Ligand Binding

Ying Wang

Associate Director, Ligand Binding
Princeton

"In my role, I am responsible for the management of the Method Development Team and overseeing method implementation and validation within the group. Additionally, as a manager, I strive for enhancement of team performance to ensure quality and on-time delivery for our clients. I have worked in the industry for more than a decade, and I really appreciate the dedication and enthusiasm that we have at inVentiv Health. Everyone truly seems focused on ensuring our clients have the data they need. In Ligand Binding, we are now working on many possible therapeutics for oncology – it is truly exciting, and our clients need this data for conferences and publications. The other exciting development for me is the expansion of Ligand Binding in Quebec City since I have a connection to Quebec, having completed my Ph.D. down the road in Montreal."

Spotlight on Mass Spectrometry



Sylvain Lachance
Scientific Expert
Quebec City

"I'm very fortunate to work at inVentiv Health. I am the first contact when a new molecule is to be evaluated. In this role, I predict the complexity of method development and try to prevent issues before they happen. Since I've been working for many years in this area, I know the details of nearly all of our assays and the history of each method – that is more than 1,000 methods for more than 800 compounds. I enjoy my position because I know that my efforts are directly related to patient outcomes and keeping down the cost of healthcare. I'm also proud of the trust and confidence my colleagues have in my work. Recently we have put emphasis on cross-site collaboration between Quebec and Princeton – this makes my job even more gratifying. I love science and new technologies and this gives me the chance to work on even more new instruments and to share and learn along with my colleagues."

➤ Mass Spectrometry Expansion

The department is adding six scientists and six new mass spectrometers including the Waters Xevo-G2-XS QToF & Waters Xevo-TQS

Clark Williard is the Executive Director of Mass Spectrometry and oversees operations at both inVentiv Health laboratories (Princeton and Quebec City). Mr. Williard is proud to be a 22-year veteran of the Princeton laboratory. “I grew up here, so to speak,” said Mr. Williard. “I have a deep personal connection to this laboratory and to the staff, and that is what drives our attitude towards customer service. Our clients are very vocal with their feedback – they want and expect the level of customer service we offer. This expansion will allow us to provide faster turnaround and more capacity. As we grow, we want to ensure that we have the capacity to meet the needs of every client for every project.”

Clark is focused on coordinating cross-functional teams working across the two sites. This sharing of expertise will translate into better, faster, more innovative solutions for our clients.

“I could not be more pleased with the way our teams in Princeton and Quebec have come together. It is very satisfying to see the collaboration and see the possibilities this will offer our clients.”



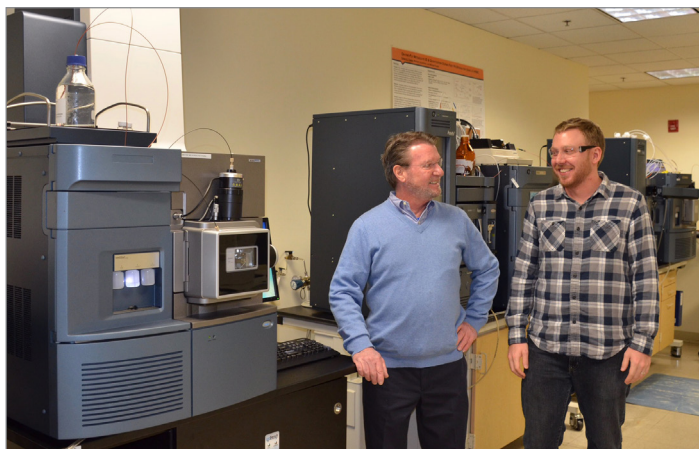
Clark Williard

➤ Exploratory Bioanalysis Cutting Edge Research, Helping Our Clients Find Unique Solutions

inVentiv Health Bioanalysis has expanded our biotherapeutic and biomarker analysis capabilities with the addition of two Waters Xevo-G2-XS QToF high resolution mass spectrometers. The cross-site Exploratory Bioanalysis Team chose the instruments after careful evaluation and comparison against other platforms.

Previously, the team has enjoyed great success with the Waters Xevo-TQS platform, supporting protein bioanalysis. Numerous peptide assays have been validated in the low pg/mL range – including insulin analogs. Drawing upon the expertise and collaboration of the Ligand Binding group, hybrid immunoaffinity-LC/MS/MS assays are producing impressive sensitivity. Coupled with the addition of the high-resolution instruments for selectivity and microliter flow rates using the ionKey® platform, further boosts are provided to obtain the lowest limits available in the industry. Combined with our industry-leading GCMS expertise, the addition of the high-res instruments in the hands of our scientists will mean unique solutions, enabling our clients to complete analyses they didn't think possible before, enhancing their clinical development programs. Tom Oglesby, Sr. Research Investigator, is a 22-year veteran of inVentiv Health, starting when the lab was Taylor Technologies. “We live in exciting times of exciting new therapies. We hope to expedite bringing those products to market with the best scientific and regulatory practices achievable.”

Tom added, “We have invested in the resources – both human and instrumentation – to proactively find unique solutions to our clients' challenges. My team is able to find solutions to analyze molecules that others thought to be impossible. This is real value for our customers. And I love having the empowerment and ability to mentor the next group of up-and-coming bioanalytical scientists.”



Tom Oglesby and Joe Hughes of the Exploratory Bioanalysis Team: A cross-site venture of inVentiv Health Bioanalysis.

**FOR MORE
INFORMATION, VISIT**

www.inVentivHealth.com/Clinical

