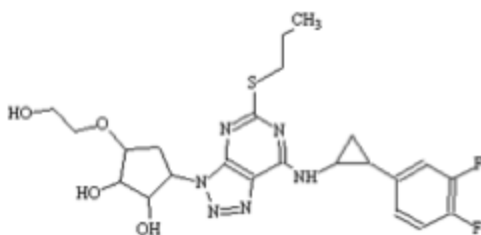


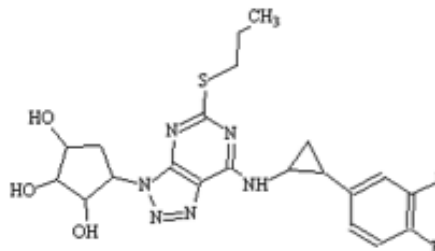
Ticagrelor:

(a cyclopentyltriazolopyrimidine characterized as a reversible oral antiplatelet agent)

Ticagrelor and its major active metabolite (AR-C124910XX) are approximately equipotent and reversibly interact with the platelet P2Y ADP-receptor to prevent signal transduction and platelet activation.



Ticagrelor 522.56 amu



AR-C124910XX 478.51 amu

A robust bioanalytical method was recently validated at inVentiv Health for the determination of Ticagrelor and AR-C124910XX in human EDTA K₂ plasma. The LC-MS/MS assay measures concentrations within the range of 5-1000 ng/mL and 1-400 ng/mL for Ticagrelor and AR-C124910XX, respectively.

The sample processing is a fast automated liquid-liquid extraction and the LC-MS/MS analysis is done within 2 minutes per sample, allowing for high throughput analysis and expedited results. This accurate and reproducible assay is immediately available for use at inVentiv Health. [Request a quote](#)

Assay Performance	Ticagrelor	AR-C124910XX
Analytical Runs	26	26
within acceptance criteria	100%	100%
Calibration Standards	416	416
within acceptance criteria	99.8%	99.0%
Quality Controls	284	284
within acceptance criteria	100%	99.6%
Mean ISR Reassay Rate	99.7%	99.7%